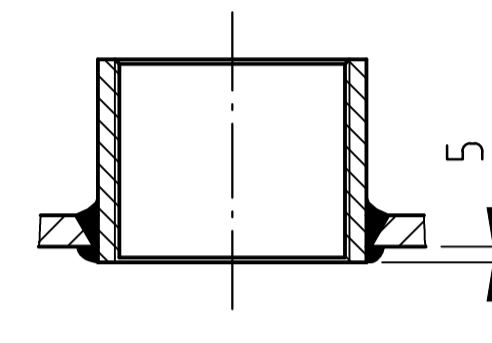
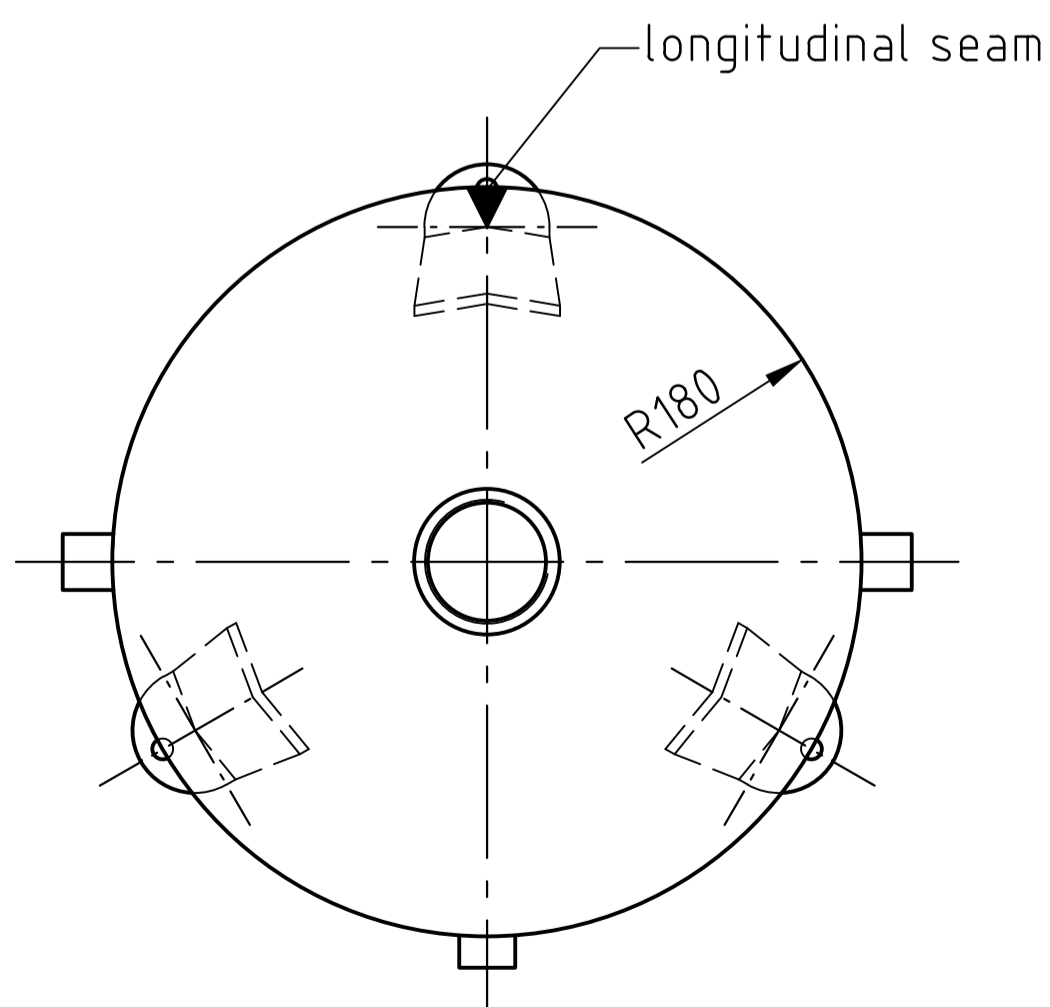
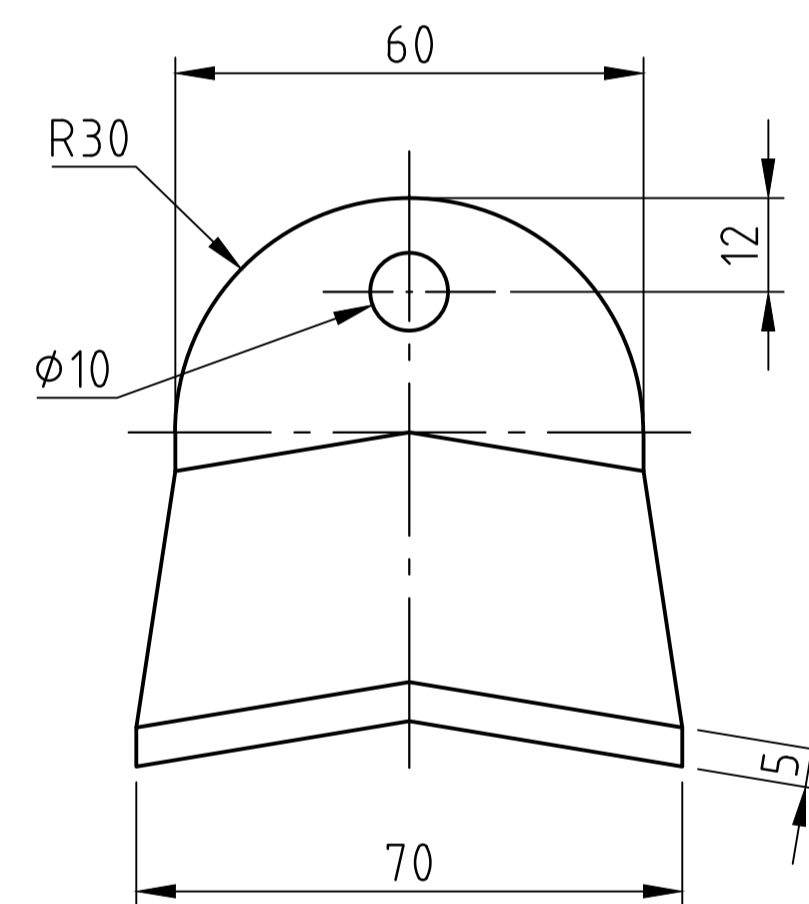


socket welding  
 drain and plug socket  
 inside flush



foot detail M 1:2



SEAMS (unless otherwise indicated on drawing):		
longitudinal seam	socket-/flangeweldings	circumferential seams
		beadseams only up to 8mm wall thickness of bottoms cyl. brim > 3,5 x wall thickness of bottoms

pressure variation :
pressure swing 0-16 bar max. operations 1.000
infinite operation of pressure swing within 20% of 16 bar
operational characteristics / calculation characteristics :
volume V (litre) : 90
max. working pressure PS (bar) : 16
test pressure PT (bar) : 22,88
min. working temp. TS (°C) : -10
max. working temp. TS (°C) : 50
fluid : compressed air / nitrogen (fluid group 2)
location : inside and outside building possible

coating :	
inside : raw	or: inside : hot dip galvanized
outside : primed (if customer wishes lacquered)	outside : hot dip galvanized

manufacturing and testing  
 acc. to PED 2014 / 68 / EU - AD 2000

conformity benchmark :	
fluid group : 2	categorie : II
diagram : 2	module : H

scale:	1:7.5
our no.:	-
order no.:	-
used for:	M+B Standardvessel
weight:	ca.40 kg
sheet:	1
of sheet:	1
date of plot:	16.06.2015
file:	ENG-010723

description:  pressure vessel upright 90 l 16 bar	drawing no.:	revision:
drawing no. of design inspection: MB 030603-2.90	date of revision: 16.06.2015	
	revision only on CAD	